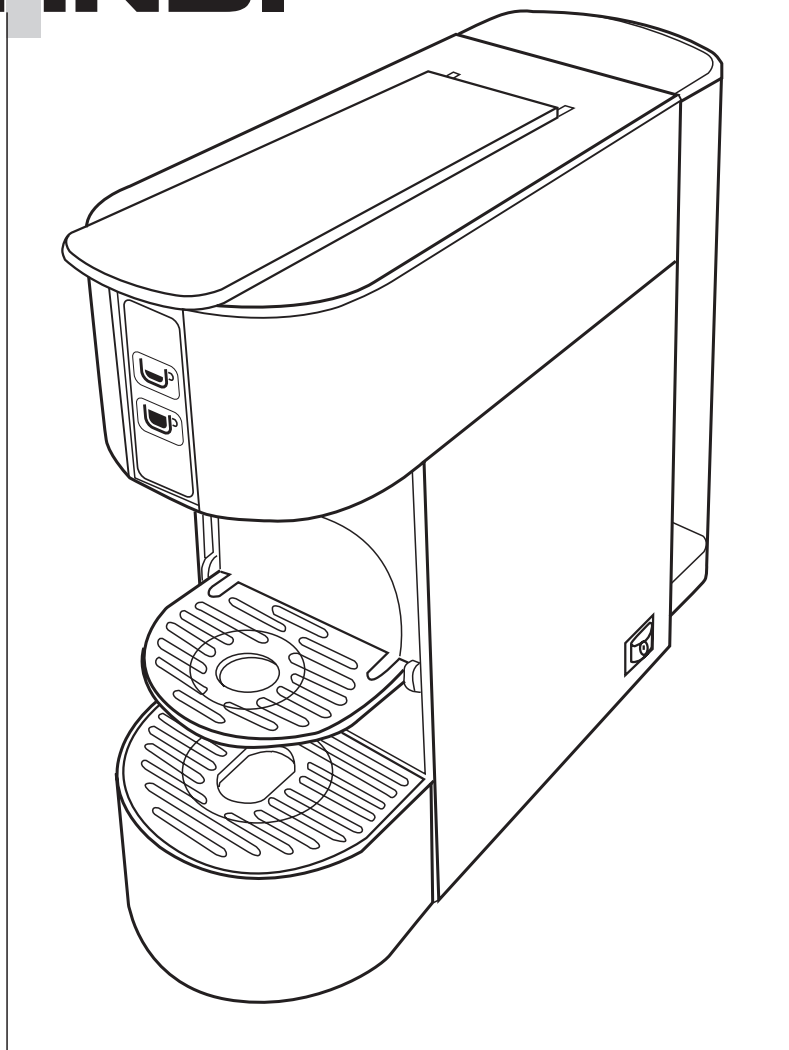


CANDi

MOD. 605 E



Made in Italy

● INSTRUCTION MANUAL

CE

General information

Caution. The manufacturer accepts no liability for damage caused by:

- Use which is improper or which does not conform to that which is intended;
- Repairs that are not carried out at an authorized service centre;
- Tampering with the power cable;
- Tampering with any component of the appliance;
- Use of non original parts and accessories.

In such cases the warranty shall be null and void.

Keep these operating instructions in a safe place and attach them to the machine just in case another person should need to use them.

For more information, or for issues either not covered or not sufficiently covered in these instructions, please contact a technician.

GENERAL DATA

Supply voltage 230 V / 50 Hz

Pump 48 W / 230 V CL . NSF

Safety thermal fuse

Boiler power 800 W

Power cord length 1 m

Water tank capacity 1 l

Made in Italy

This machine conforms to European Directives

CE Declaration of Conformity

SAFETY DEVICES

Thermal fuse

WHERE TO PLACE THE COFFEE MACHINE

Place the coffee machine in a safe place, where nobody can tilt it or be harmed by it. Do not use the machine outdoors; never leave it in environments with temperatures lower than 5°C. Do not place the machine on hot surfaces or close to open flames, as this will damage the appliance. Keep the coffee machine within at least 60 cm of washbasins, water taps, flames, hot surfaces.

CLEANING THE COFFEE MACHINE

Before attempting to clean the machine, turn all the switches off and unplug the appliance. Also, allow the machine to cool down. Never plunge the coffee machine in water! It is forbidden to dry any part of the machine in conventional and/or microwave ovens. It is strictly forbidden to service the inner parts of the machine.

MACHINE CARE

After each use, turn off all the switches on the machine, unplug and empty the tank. Store the machine in a dry place, out of the reach of children. Protect the machine from dust and dirt.

- Construction and execution due to technological progress are subject to change without notice
- This equipment conforms to european Directive

SAFETY INSTRUCTIONS

Never allow the parts supplied with electricity to come in contact with water: there is the danger of a short circuit! Steam and hot water can cause burns!

The appliance is designed only for home use. Technical modifications and unlawful use of the appliance are forbidden because of their associated risks. The machine may only be used by adults in a balanced psychophysical state.

Only connect the machine to a suitable power outlet.

Always be certain that the electrical outlet is provided with a ground line and that it is of a voltage corresponding to that indicated on the machine's data plate.

Never use the machine if the power cord is defective.

Have defective cords or plugs replaced immediately and only by an authorized service centre. Do not allow the power cord to pass around corners, over sharp edges, or over very hot objects, and keep it away from oil.

Keep the coffee machine within at least 60 cm of washbasins, water taps, flames, hot surfaces. Do not carry and/or pull the coffee machine by the power cord.

Do not unplug the machine by pulling on the power cord, and do not touch the plug with wet or moist hands.

Be certain that children do not have any possibility to play with the machine. Do not leave the machine within their reach, use, or custody.

Children are not aware of the dangers associated with home appliances.

In the event that boiling water and/or steam escapes, beware of the danger of burns!

In poor power conditions, the appliance may give rise to transient voltage drops.

The appliance must be switched on exclusively for the time necessary for its use, after which it should be turned off with the main switch (9) and the plug should be removed from the power socket.

Use the appliance only indoors, protected from external atmospheric agents.

The item is designed for household and similar uses, such as:

- Offices and other working areas, including kitchen corners for shop staff
- Cottages
- Hotels, motels and other residential premises, if used directly by customers
- Bed & Breakfasts

Always remove the power cable from the power outlet:

- Before removing or replacing the water tank
- When filling the water tank
- If a malfunction occurs
- When the machine is not going to be used for long periods of time
- Before cleaning the machine

Caution. Follow the instructions given below in order to prevent damage to the machine:

- **Use cold tap water only to fill the water tank. Use fresh water every time you fill the tank. Do not use sparkling mineral water or other liquids**
- **Always ensure that there is water in the tank. Running the water pump with no water in the tank will cause the pump to overheat**

Legal notice

These instructions contain essential information for proper operation and accurate maintenance of the appliance as well as information on machine functions.

Understanding such information and adhering to the instructions given in this booklet is critical for hazardless, safe operation and maintenance of the appliance.

Please contact your local retailer or the manufacturer if you require further information or if you encounter problems that you feel have not been adequately covered or explained clearly in these instructions for use.

Also, please note that the contents of this instructions manual are not part of any earlier or existing arrangement, legal agreement or contract and that no future arrangement, agreement or contract will alter the substance of the contents in this manual.

All of the manufacturer's obligations are contained in the appliance sale agreement, which also contains the full and exclusive terms and conditions of guarantee.

All the terms of guarantee contained in the sale agreement are neither restricted nor extended by way of these explanations.

These instructions for use contain information protected by copyright.

These instructions for use may not be photocopied or translated into another language without the prior written permission of the manufacturer.

Disposal of the appliance

- Appliances that are no longer in use should be made inoperative
- Disconnect the plug from the electrical outlet and cut the electrical cable
- Appliances no longer in use should be sent to an appropriate waste collection centre
- Dispose of the product and its components in accordance with local regulations regarding the disposal of electrical appliances

Caution

The manufacturer accepts no liability for damage caused by:

- Use which is improper or which does not conform to that which is intended
- Repairs that are not carried out at an authorized service centre
- Tampering with the power cable
- Tampering with any component of the appliance
- Use of non original parts and accessories

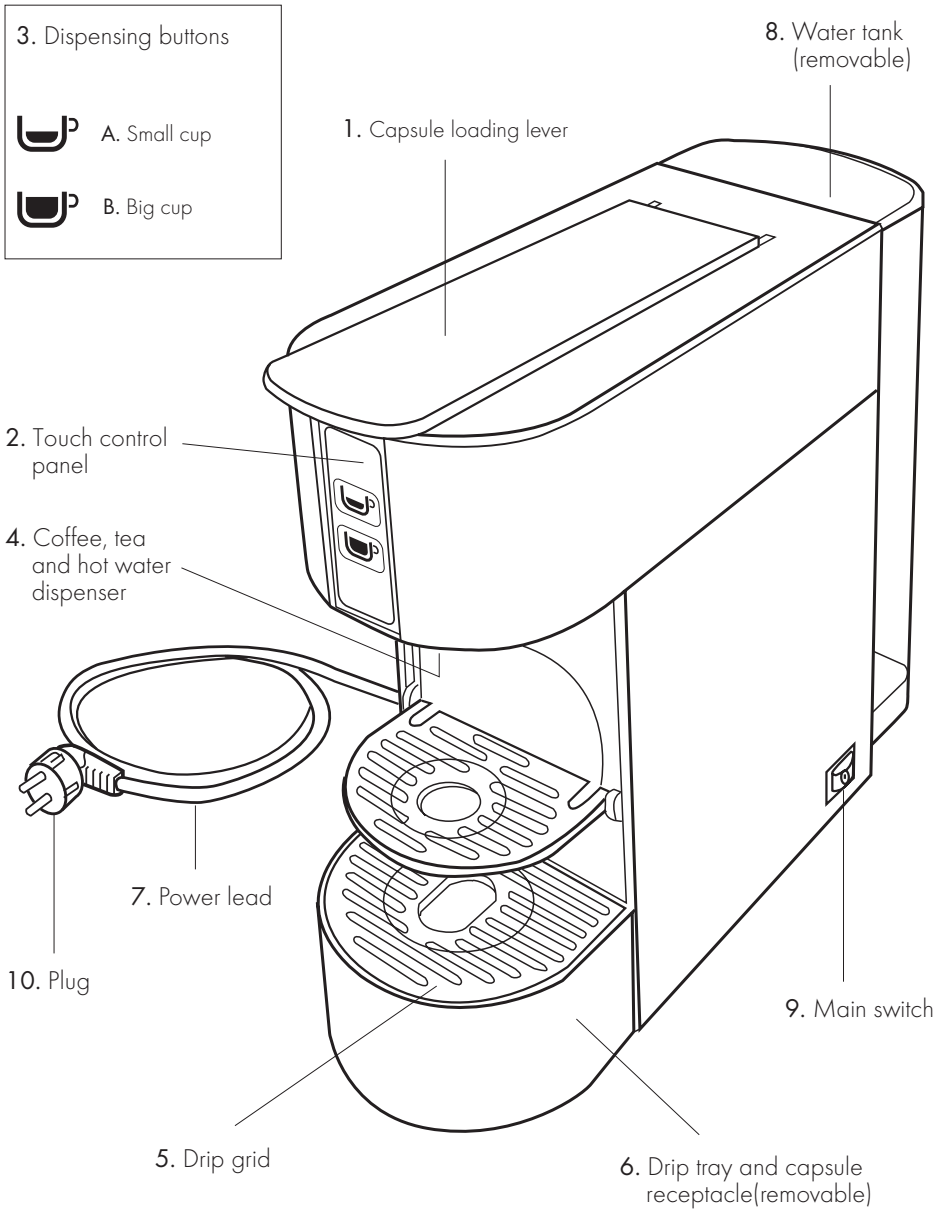
In such cases the warranty shall be null and void.

Preparing the coffee machine ready for use

Unpacking:

Check the machine for damage after you have taken it out of its packing. If in doubt about its integrity, do not use the appliance and contact the retailer. The packaging materials should never be left within the reach of children since these materials can pose a hazard. They should be disposed of or stored in accordance with local environment protection regulations.

Machine components



Operating the coffee machine

Fill the tank

- To extract the tank (8), press it down and turn it outwards at the same time **(Fig.1)**
- Remove the cover and fill the tank with fresh water to maximum level 1 l. **(Fig.2)**
- Close the cover and replace the tank, tilting it slightly and resting it on the water valve. Press the top of the machine until you hear a click. To avoid water leakages, check that the tank is firmly secured **(Fig.3)**

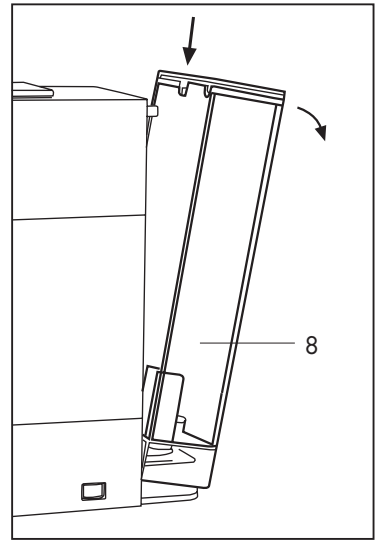


Fig. 1

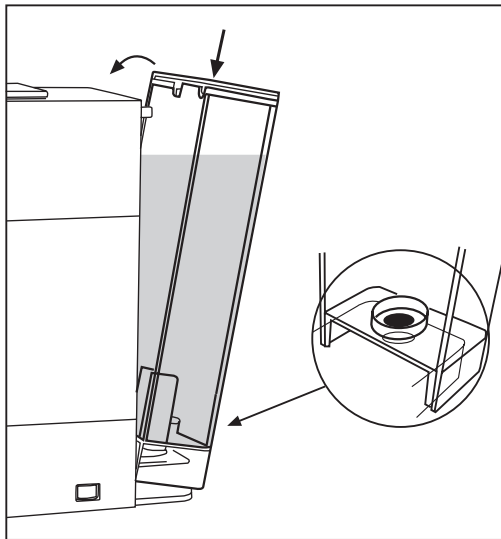


Fig. 3

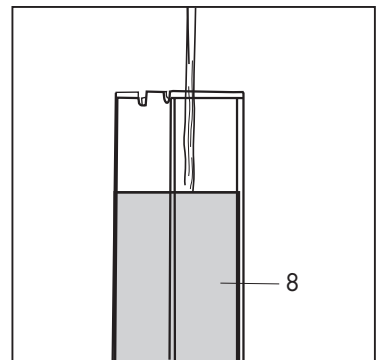


Fig. 2

Starting/warming up the coffee machine

- Use only capsules that are specific for this model
- Plug the coffee machine into an electrical socket
- Power the coffee machine by turning on the main switch (9)

(Fig.4)

- The buttons (A) and (B) start to blink; when they appear with a fixed light the machine is ready for use (Fig.4)

Mod. Energy saving function

If the machine is left switched on and is not used, after 9 minutes the energy saving function is activated and the buttons (A) and (B) blink every 2 seconds.

To use the machine again press one of the buttons (A) or (B) and wait for it to heat up; when the buttons (A) and (B) appear with a fixed light the machine is ready for use.

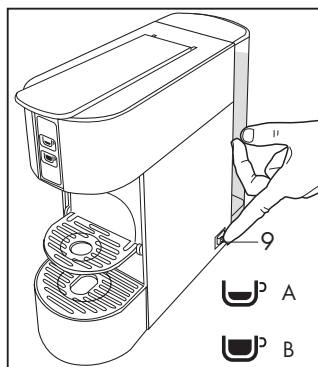


Fig. 4

Rinsing the machine/inner circuits

The coffee machine should be rinsed both at its very first use and when it has been inoperative for a long spell of time. By performing this quick procedure, you will ensure that all inner circuits are rinsed.

- Ensure that there are no capsules inside; power on the machine via the main switch (on the back) (9)
- Close the small cup support (11) and place a large empty cup under the opening for dispensing coffee/tea/beverages.

(Fig. 5)

When the buttons (A) and (B) appear with a fixed light the machine is ready for use. Press a button (A) or (B); the machine dispenses water, press the button again when you have obtained the desired amount of water (Fig. 6). The machine is rinsed when at least 3 glasses of water have been dispensed.

NOTE

open the support (11) to prepare espresso coffee correctly and to use small cups (Fig. 7).

To use large cups, close the support (11) and place the cup directly on the grid of the drip tray (5) (Fig. 5)

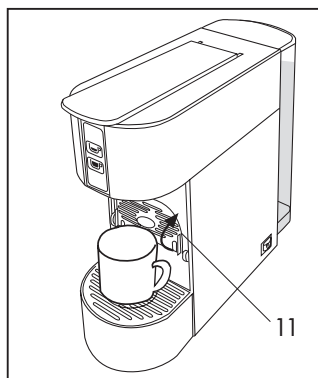


Fig.5

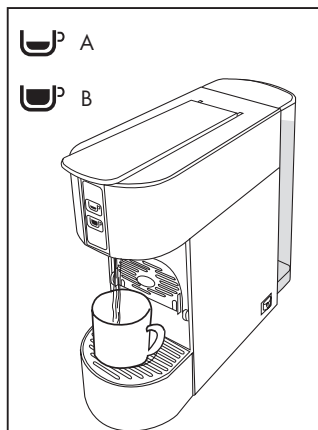


Fig.6

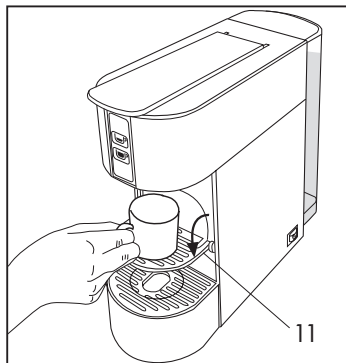


Fig.7

Programming the dispenser buttons

Big cup: Press and hold the button (B). The machine will start delivering water. Once the desired water level is reached release the button (B). The machine will then stop delivering water and the desired quantity will be memorized for future dispensing. **(Fig.8)**

Small cup: Press and hold the button (A). The machine will start delivering water. Once the desired water level is reached release the button (A). The machine will then stop delivering water and the desired quantity will be memorized for future dispensing. **(Fig.8)**

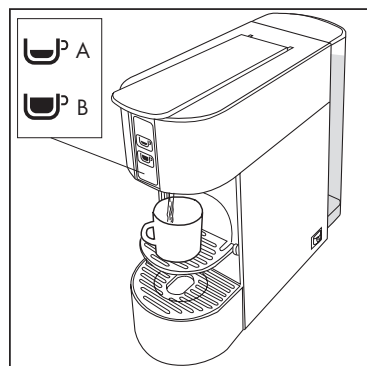


Fig.8

Preparation of coffee/tea/drinks

- Use only capsules that are specific for this model
- Place a cup under the dispenser
- Slowly lift the control lever (1) backwards (until it stops) **(Fig. 9)** and introduce a capsule in the slot provided **(Fig. 10)**

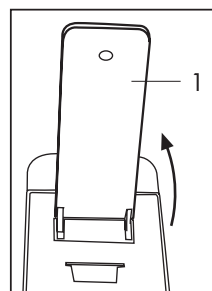


Fig. 9

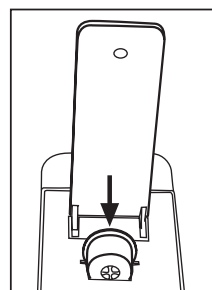
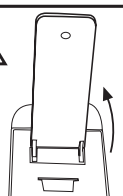


Fig. 10

WARNING:

Before introducing a capsule into the coffee machine, lift the control lever (1) on the top of the machine slowly and fully. For proper hygiene, and to preserve the high product quality, it is advisable to eject the capsule soon after the drink has been dispensed.



Close the lever (1) completely and press one of the dispensing buttons: short (A), big (B) according to your taste **(Fig. 11)**

NOTE

The machine is equipped with a pre-brewing system: when a dispensing button (A) or (B) is pressed it starts dispensing, stops for a moment and restarts automatically.

- Repeat the steps above for additional cups of coffee/tea using a new capsule for each drink
- To fully remove the capsule, slowly lift the lever (1). If the capsule does not come out, repeat the procedure or press the start button (A) while simultaneously lifting the lever (1)

USEFUL TIP:

Use thick cups when preparing Espresso and heat them beforehand. This will keep your coffee warm for longer. Cups can be heated under hot running water.

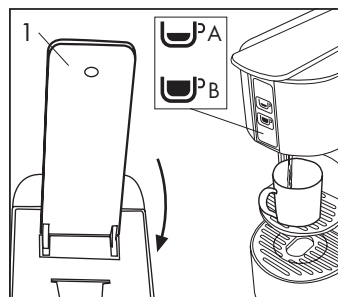


Fig. 11

Once coffee/tea is prepared

Once you have prepared coffee/tea you can eject the used capsule as follows:
1. Lift the control lever backwards (the capsule will drop into the receptacle provided)

NOTE: Used capsules may get stuck inside the machine if they are not ejected straight away. If that happens, lift and lower the control lever to free the capsule(s).

As much as 14 used capsules can fit into the capsule receptacle. Empty the receptacle on a regular basis.

2. If you are going to make another cup of coffee/tea, introduce a new capsule and repeat the coffee/tea making procedure. If you are finished, lower and lock the lever

SAFETY AND ENERGY-SAVING TIPS:

If you are going to be away from home for some time, remember to power off the machine at the main switch (on the back). Do the same at night before going to bed. The coffee machine heats up very rapidly and is normally ready for use in 1 minute after power-on.

If you plan not to use the coffee machine for a long period of time, empty the tank and unplug the appliance.

Emptying the capsule receptacle

Up to 14 capsules can fit into the capsule receptacle. It is advisable to regularly empty the receptacle to prevent the capsules from getting stuck inside it. To do this, you need to remove the capsule receptacle (6). **(Fig. 12)** Empty the capsule receptacle and rinse. Clean off any water and coffee residues from the drip tray and grid. Once clean, reintroduce the tray and the capsule receptacle into the machine **(Fig. 13)**

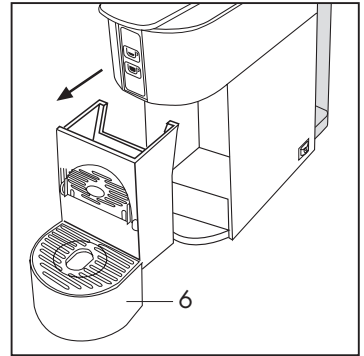


Fig. 12

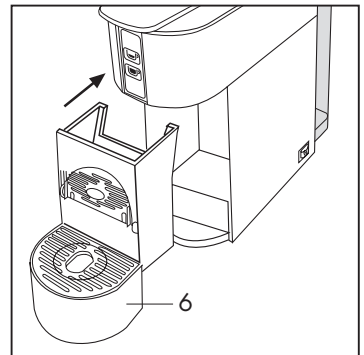


Fig. 13

Storing the coffee machine away

Power off and unplug the machine if it is not going to be used for a prolonged period of time.

Store the coffee machine in a dry place, away from dust and out of the reach of children.

We would advise you to store the machine in its original packaging.

Temperatures in the storage area should not be lower than 5°C, to avoid damage to the inner parts of the machine from water freezing inside it.

Repair/maintenance

In the event of a malfunction, or if the machine is dropped and a defect arises or is suspected, unplug the machine and call an authorised service centre. Never operate a defective machine. Only authorised service centres can service or repair the appliance. The manufacturer disclaims responsibility for any damage and/or injury that may result in the event of service that is carried out in breach of the applicable safety regulations or is executed by unauthorised personnel.

Disposal

Appliances no longer in use should be returned free of charge to a point of sales to ensure that they are disposed of properly. Appliances with a hazardous fault condition should be disposed of immediately, making sure that they can no longer be used. Do not dispose of electrical appliances as household waste (environment protection).

REMOVING LIME SCALE

The formation of lime scale is the natural consequence of use of the machine. Lime scale must be removed every 1-2 months; if the water is very hard, descale the machine more frequently. To remove lime scale you can use a non-toxic or non-harmful descaling product for coffee machines, readily available on the market.

Fill the tank with the descaling solution, following the instructions on the descaler pack

After carrying out a second rinse cycle with clean water, fill the tank again. In this way the machine is ready for use.



IMPORTANT INFORMATION FOR CORRECT DISPOSAL OF THE PRODUCT IN ACCORDANCE WITH EC DIRECTIVE 2002/96/EC.

At the end of its working life, the product must not be disposed of as urban waste.

It must be taken to a special local authority differentiated waste collection centre or to a dealer proving this service. Disposing of a household appliance separately avoids possible negative consequences for the environment and health deriving from inappropriate disposal and enables the constituent materials to be recovered to obtain significant savings in energy and resources. As a reminder of the need to dispose of household appliances separately, the product is marked with a crossed-out wheeled dustbin.

Problem	Solution
<p>Selecting the distribution button(A-B) you cannot get a beverage</p>	<ol style="list-style-type: none"> 1) Fill the tank with water 2) Check if the water tank is well located 3) Lift the lever to permit air outlet take the capsule off and wait for a while to let the pump be cool, close the lever again and select the distribution button(A-B) 4) Empty the capsule receptacle and reset the coffee function: turn the machine off and on again switching the main switch (9) off and on <div data-bbox="860 244 1028 472" style="text-align: right;"> </div> <p>If you cannot solve the problem, you are kindly requested to contact your service center</p>
<p>The capsule is not ejected</p>	<p>Close the lever (1), then slowly open it again Press the start button (A-B) and slowly open the lever as water is being delivered (1)</p>
<p>The lever (1) will not slide properly</p>	<p>Press the start button (A-B), then open and close the lever (1) several times while water is being dispensed</p>

Problem	Causes	Corrective action
Coffee/tea is no longer dispensed	the tank is empty	fill the tank
	the pump is defective	call the service centre
	the capsule is not (fully) pierced	call the service centre
It is not possible to dispense coffee, tea, or boiling water	the water tank is not fully seated	seat the tank properly
	the pump is defective	call the service centre
Coffee/tea is cold	the heating system is defective	call the service centre
	the machine is in energy saving mode	reset the machine as indicated on page 20 (Energy saving function)
The pump is too noisy	the tank is empty	fill the tank
	the water tank is not seated properly	seat the tank properly take a new capsule
	the capsule is not (fully) pierced use a new capsule	
A few drops come out of the dispenser, especially when the machine is warming up	this is not a fault	it is normal for a few drops to come out, this is not a defect
Coffee tastes sour	the machine was not rinsed properly after descaling	re-rinse the machine
	the coffee sell by date has expired	use a new capsule
The capsule adheres to the infuser as it opens	The capsule was not expelled immediately after the drink was dispensed	Close and open the lever (A-B)

